

RPA653Mu01 200ug

Recombinant Bone Morphogenetic Protein 1 (BMP1)

Organism Species: *Mus musculus* (Mouse)

Instruction manual

FOR RESEARCH USE ONLY

NOT FOR USE IN CLINICAL DIAGNOSTIC PROCEDURES

12th Edition (Revised in Aug, 2016)

[PROPERTIES]

Source: Prokaryotic expression

Host: *E.coli*

Residues: Gly856~Lys982

Tags: N-terminal His Tag

Subcellular Location: Extracellular matrix

Purity: > 97%

Traits: Freeze-dried powder

Buffer formulation: 20mM Tris, 150mM NaCl, pH8.0, containing 0.01% skl, 5%Trehalose.

Original Concentration: 150µg/mL

Applications: Positive Control; Immunogen; SDS-PAGE; WB.

(May be suitable for use in other assays to be determined by the end user.)

Predicted isoelectric point: 4.9

Predicted Molecular Mass: 15.3kDa

Accurate Molecular Mass: 22/23kDa as determined by SDS-PAGE reducing conditions.

Phenomenon explanation:

The possible reasons that the actual band size differs from the predicted are as follows:

1. Splice variants: Alternative splicing may create different sized proteins from the same gene.
2. Relative charge: The composition of amino acids may affects the charge of the protein.
3. Post-translational modification: Phosphorylation, glycosylation, methylation etc.
4. Post-translation cleavage: Many proteins are synthesized as pro-proteins, and then cleaved to give the active form.
5. Polymerization of the target protein: Dimerization, multimerization etc.

[USAGE]

Reconstitute in 20mM Tris, 150mM NaCl (pH8.0) to a concentration of 0.1-1.0 mg/mL. Do not vortex.

[STORAGE AND STABILITY]

Storage: Avoid repeated freeze/thaw cycles.

Store at 2-8°C for one month.

Aliquot and store at -80°C for 12 months.

Stability Test: The thermal stability is described by the loss rate. The loss rate was determined by accelerated thermal degradation test, that is, incubate the protein at 37°C for 48h, and no obvious degradation and precipitation were observed. The loss rate is less than 5% within the expiration date under appropriate storage condition.

[SEQUENCE]

```
GFQAS HSTECGGQVR ADVKTKDLYS HAQFGDNNYP GGVDCEWVIV
AEEGYVELV FQTFEVEEET DCGYDYIELF DGYDSTAPRL GRYCGSGPPE
EVYSAGDSVL VKFHSDDTIS KKGFLRYTS TK
```

[IDENTIFICATION]

```
IGGTTTCAGGGATCCCACTCCACAGAGTGTG8899CCAGTGTG99CAGATGTGAGACCAAGACTTTATTCGATG00CAGTT099GATACCACTAC0CTGGAGGGGTGGACTGTGAGTGGTTCATGTG00CGAGGAGGCTATG93GTGGACTCGTGTTCAGAGCTTCGAGGTGGAGGGAGACTGACTGTG0CTATG#
G F Q A S H S T E C G G Q V R A D V K T K D L Y S H A Q F G D N N Y P G G V D C E W V I V A E E G Y G V E L V F Q T F E V E E E T D C G Y D
```

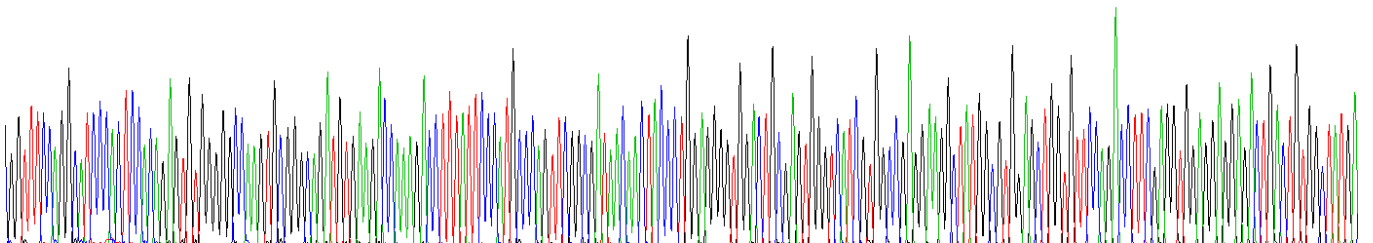
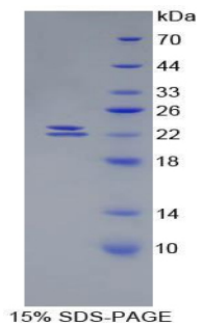


Figure. Gene Sequencing (Extract)



[IMPORTANT NOTE]

The kit is designed for research use only, we will not be responsible for any issue if the kit was used in clinical diagnostic or any other procedures.