

CGD213Hu01 100ng

cDNA of Thyroid Stimulating Hormone Beta (TSHb)

Organism Species: Homo sapiens (Human)

Instruction manual

FOR RESEARCH USE ONLY

NOT FOR USE IN CLINICAL DIAGNOSTIC PROCEDURES

1st Edition (Revised in Dec, 2017)

[PROPERTIES]

Gene Synonym: TSHb

NCBI Reference Sequence: NM_000549.4

cDNA Size: 417bp

Residues: Met1~Val138 (Accession # P01222)

Vector: Expression vector

Traits: Freeze-dried powder

[USAGE]

Briefly centrifuge the tube for 30 seconds, then reconstitute the lyophilized plasmid in sterile water to make stock solution. (TE buffer is not recommended for inhibiting enzyme reactions.)

Note: *Select the targeted gene carefully. It is recommended to subclone the gene into cloning vector for preservation.*

[STORAGE AND STABILITY]

Storage: Avoid repeated freeze/thaw cycles.

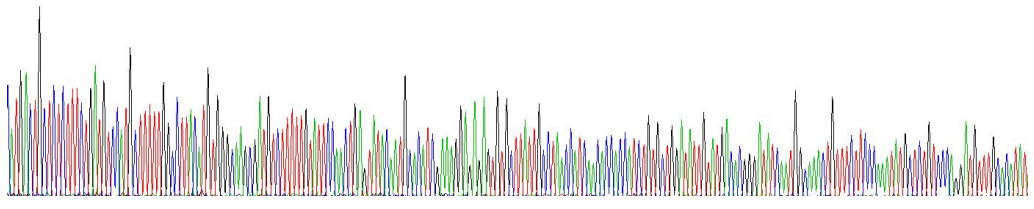
Lyophilized plasmid can transport at room temperature and stable more than 12 months at -80°C.

[SEQUENCES]

ATGACTGCTCTCTTTCTGATGTCCATGCTTTTTGGCCTTACATGTGGGCAAGC
 GATGTCTTTTTGTATTCCAAGT GAGTATAACAATGCACATCGAAAGGAGAGAGT
 GTGCTTATTGCCTAACCATCAACACCACCATCTGTGCTGGATATTGTATGACA
 CGGGATATCAATGGCAAAGT GTTTCTTCCCAAATATGCTCTGTCCCAGGATGT
 TTGCACATATAGAGACTTCATCTACAGGACTGTAGAAATACCAGGATGCCAC
 TCCATGTTGCTCCCTATTTTTCTATCCTGTTGCTTTAAGCTGTAAGTGTGGCA
 AGTGCAATACTGACTATAGTGACTGCATACATGAAGCCATCAAGACAAACTAC
 TGTACCAAACCTCAGAAGTCTTATCTGGTAGGATTTTCTGTCTAA

[IDENTIFICATION]

3TGAAGCTGCTCTCTTTCTGATGTCCATGCTTTTTGGCCTTACATGTGGGCAAGC
 HTALFLHSMFLFGLTCGQANSFPCIPTFEVTHNHIERRRECAVCLTTINTTICAGYCMTRDINGKLF LPKYAL SODVCTYI



TGAGCTGCTCTCTTTCTGATGTCCATGCTTTTTGGCCTTACATGTGGGCAAGC
 R D F I Y R T V E I P G C P L H V A P V F S Y P V A L S C K C G K C N T D V S D C I H E A I K T N Y C T K P Q K S Y L V G F S V * I

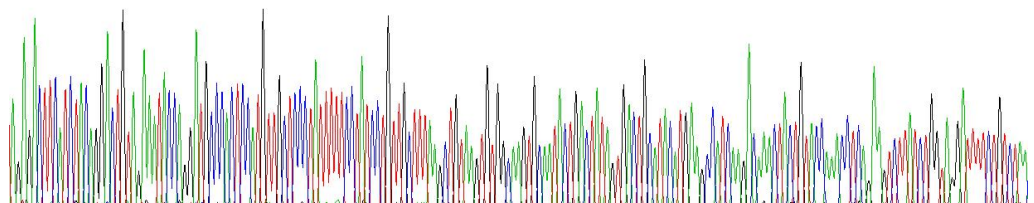


Figure . Gene Sequencing (Extract)

[QUALITY CONTROL]

1. Plasmid construction has been confirmed by restriction analysis and ORF sequencing.
2. Recombinant Plasmid has been expressed in BL21(DE3).

3. Identical with the Gene Bank Ref. ID sequence Synonymous mutation ,
Missense mutation ,

[IMPORTANT NOTE]

The kit is designed for research use only, we will not be responsible for any issue if the kit was used in clinical diagnostic or any other procedures.